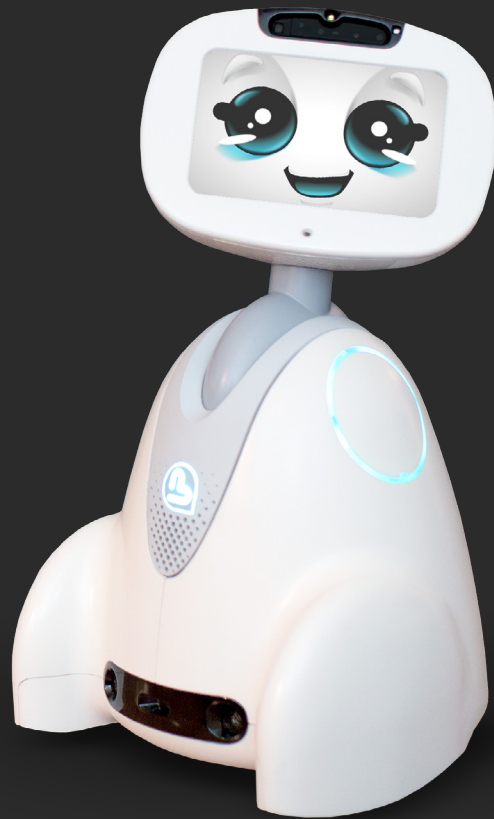


Configuration Telepresence

User Guide V3.0

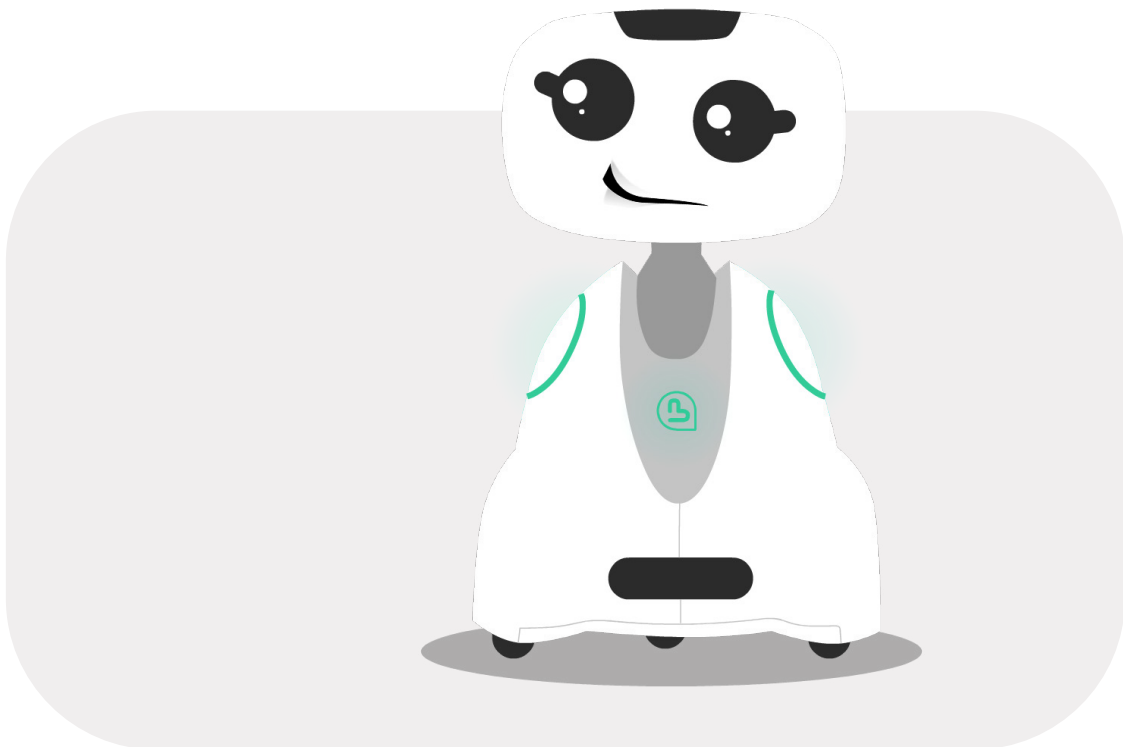


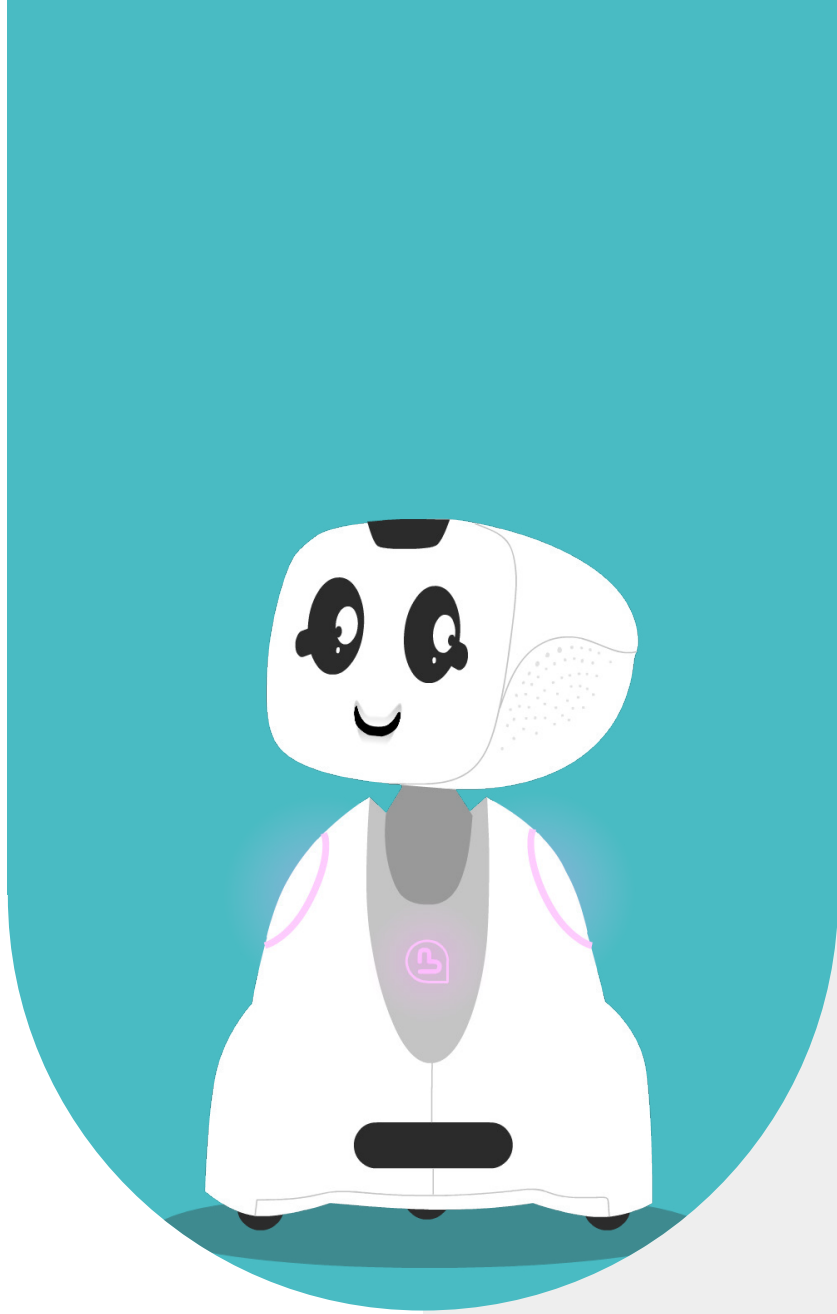
Buddy[®]
The Emotional Robot



1 - SUMMARY

1 - SUMMARY	2
2 - INTRODUCTION	4
TELEPRESENCE SETUP	5
3 - CREATION OF AN AGORA.IO ACCOUNT	6
REGISTRATION	7
EMAIL ADDRESS VERIFICATION	8
CUSTOMIZATION	8
4 - RECOVERY OF IDENTIFIERS AGORA.IO	9
PROJECT SETUP	10
RECOVERY OF PROJECT IDENTIFIERS FOR MYBUDDYAPP	11
5 - ACTIVATION OF DATACENTER GEOLOCATION	12
AGORA.IO CONSUMPTION MONITORING	14
6 - INSTALLATION OF MYBUDDYAPP	15
7 - CONNECTION ON MYBUDDYAPP	17
PROVIDING INFORMATION USER	18
AGORA.IO ACCOUNT INFORMATION	19





2 - INTRODUCTION

TELEPRESENCE SETUP

The Buddy robot's tele-presence system uses the agora.io platform which allows audio and video exchanges in real time (like with Zoom or Skype). To take advantage of this solution, you must start by creating an agora.io account from your computer or tablet. Once you have created your account, download the MyBuddyApp application on your tablet and log in with your username and password.

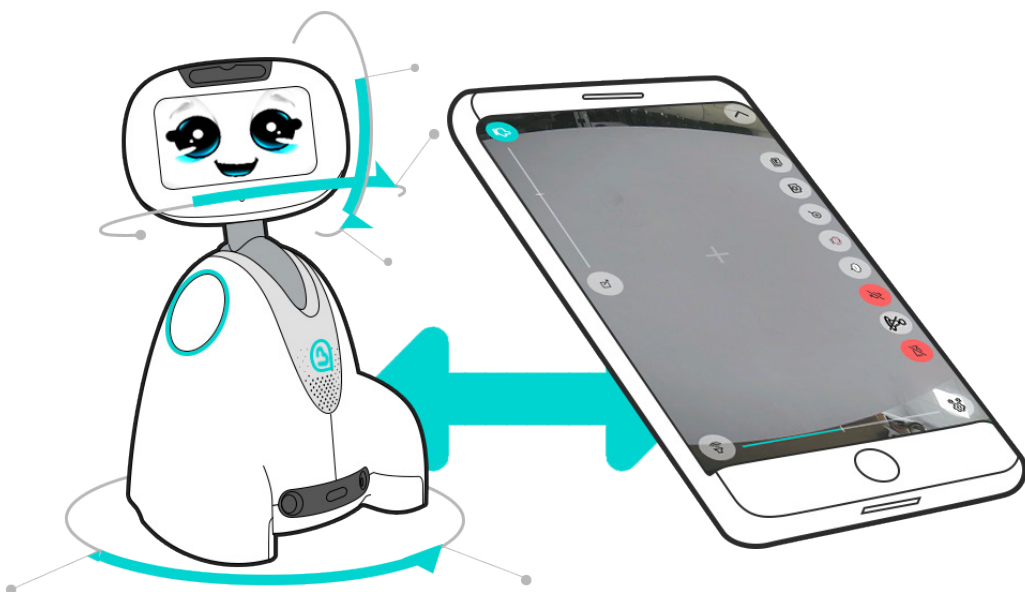
Creating an agora.io account is free and allows you to have 10,000 minutes of free communication per month with your Buddy, or around 5 hours per day.

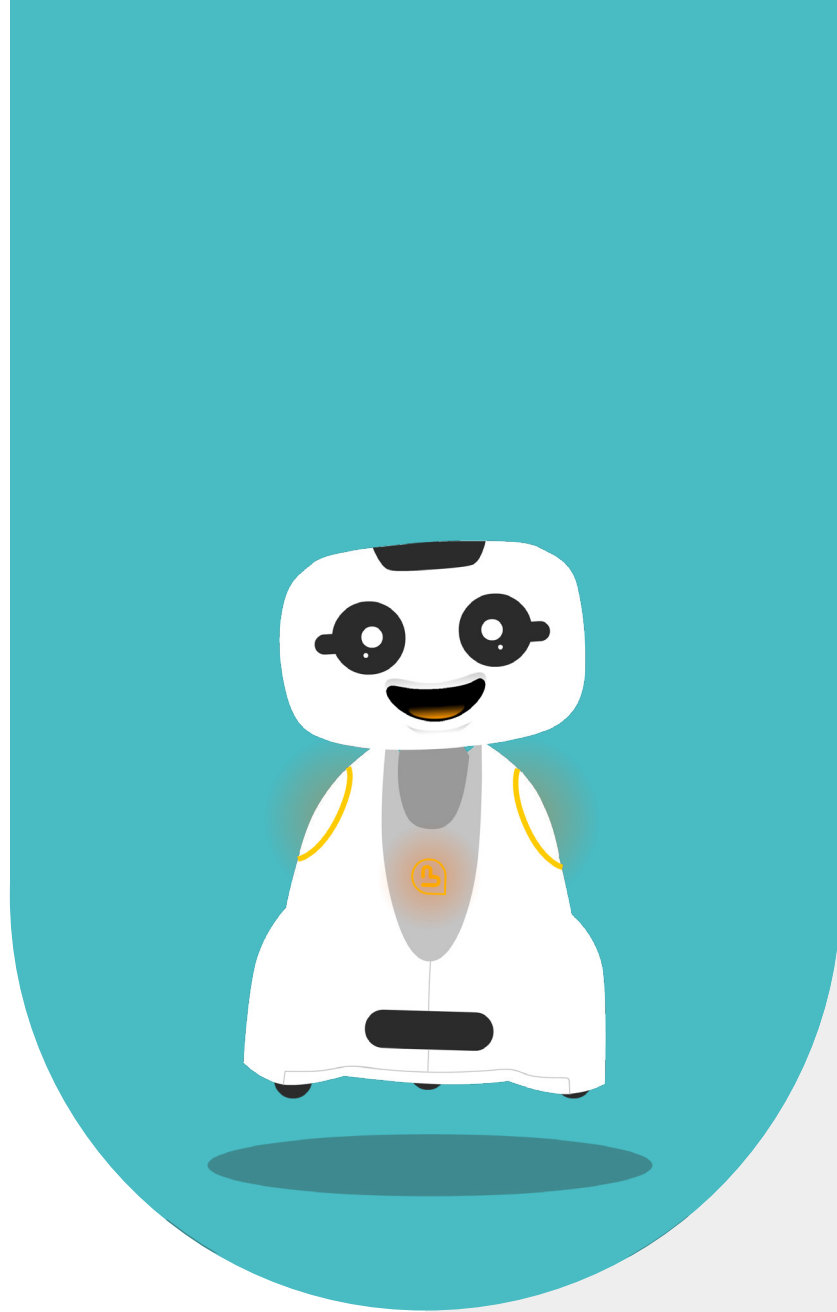
Once your agora.io account is created, you can install MyBuddyApp and follow the setup steps for first use. To do this, you will need the user account (email and password) that we have prepared for you and that you received by email at the same time as your Buddy.

Here are the different steps of the installation:

Creating an agora.io account
Retrieving agora.io identifiers
Installing MyBuddyApp
Connection to MyBuddyApp
Entering user information
Entering the agora.io account

Note: Creating the agora.io project and entering the account in MyBuddyApp will only need to be done on the first device installed. If you use MyBuddyApp on other tablets or phones you will not have to repeat these operations.





3 - CREATION OF AN AGORA.IO ACCOUNT

It is preferable to create the agora.io account on the agora.io site from the tablet or phone that you will use for telepresence directly, so you can easily copy the agora.io identifiers to MyBuddyApp.

To create your account, start by going to the agora.io website.

REGISTRATION

Complete all the fields in the form and click on "Create Account".

Already have an ac

Signup Verify Customize

1 2 3

Set up your free account

10,000 free minutes per month. No credit card required.

All fields required

Buddy Demo

FR - France Company Website
www.bluefrogrobotics.com

Buddy.demo.1234@gmail.com

.....

By checking this box you agree to our [Terms of service](#), [Privacy Policy](#) and [Acceptable Use Policy](#)

Create Account

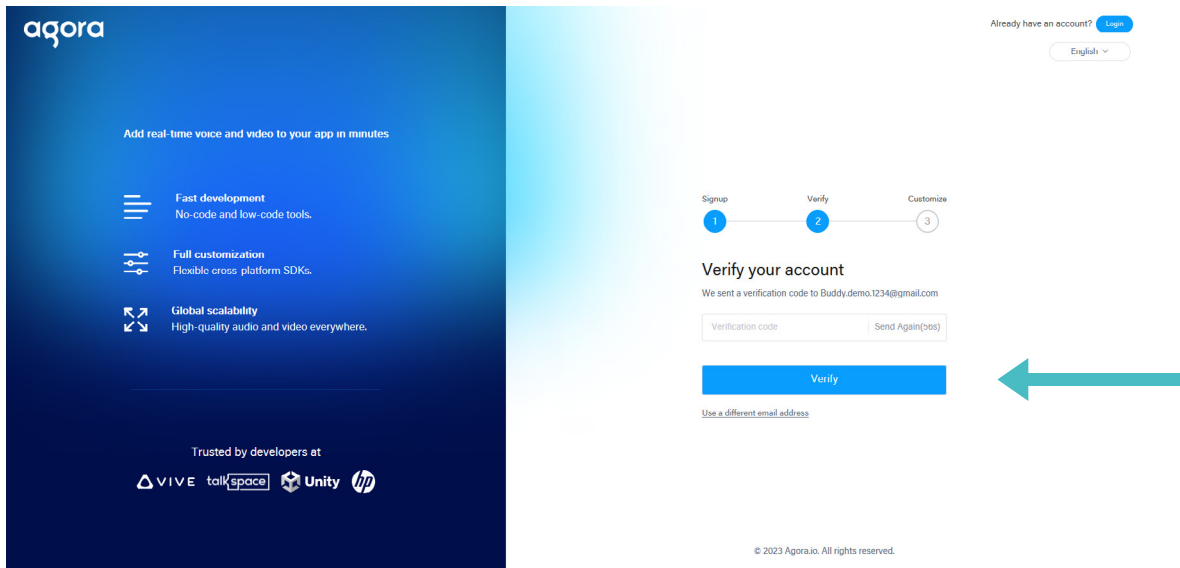
or sign up with

© 2023 Agora.io. All rights reserved.

Note: The "Company Website" field is mandatory, if you do not have a website you can put that of Blue Frog Robotics (www.bluefrogrobotics.com).

EMAIL ADDRESS VERIFICATION

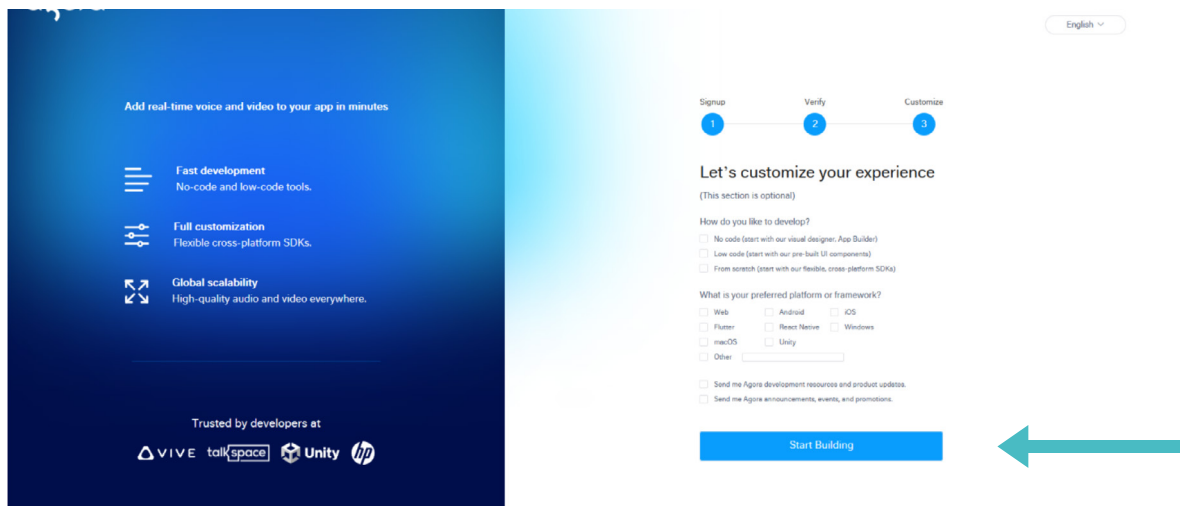
Following the previous step, you received a code in your mailbox, enter this code on the verification page.



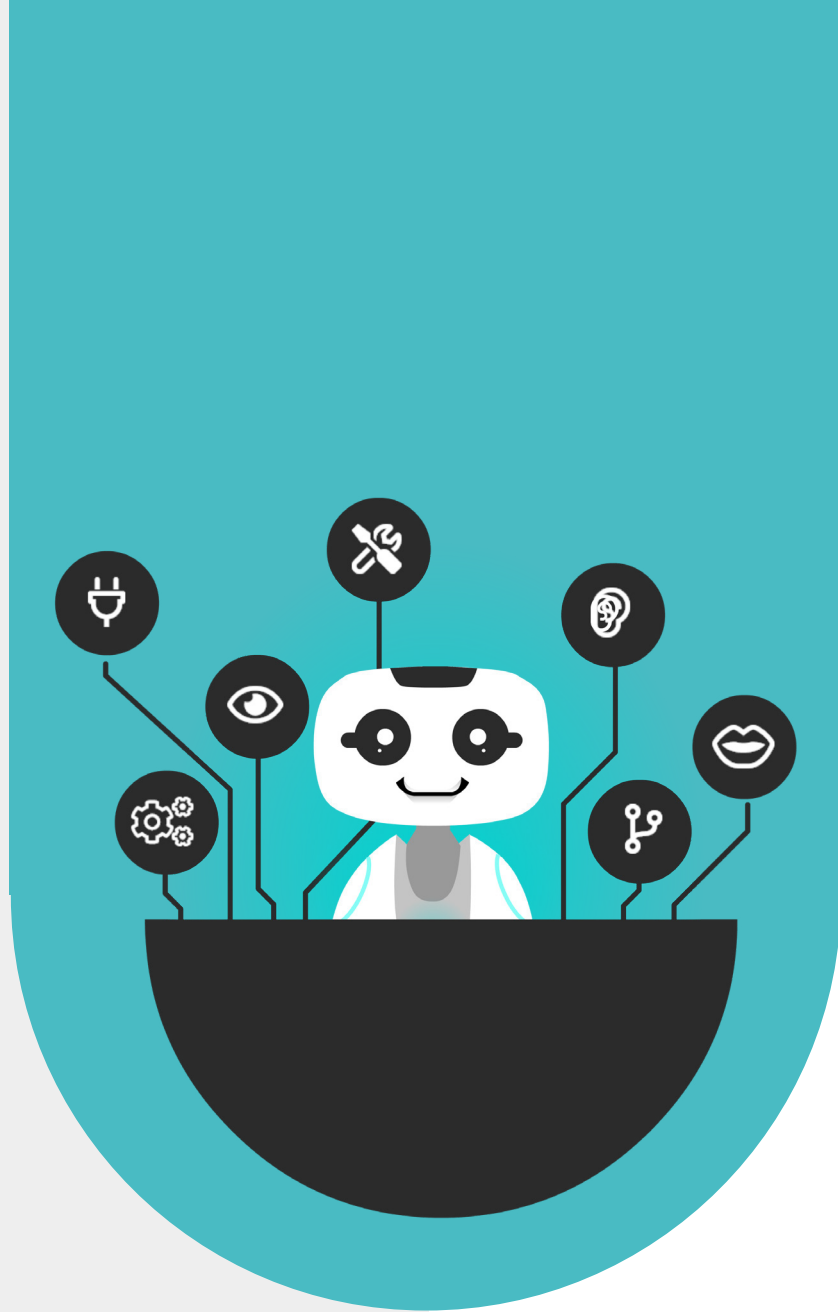
Then click on the “Verify” button.

CUSTOMIZATION

The next screen allows you to enter your preferences.



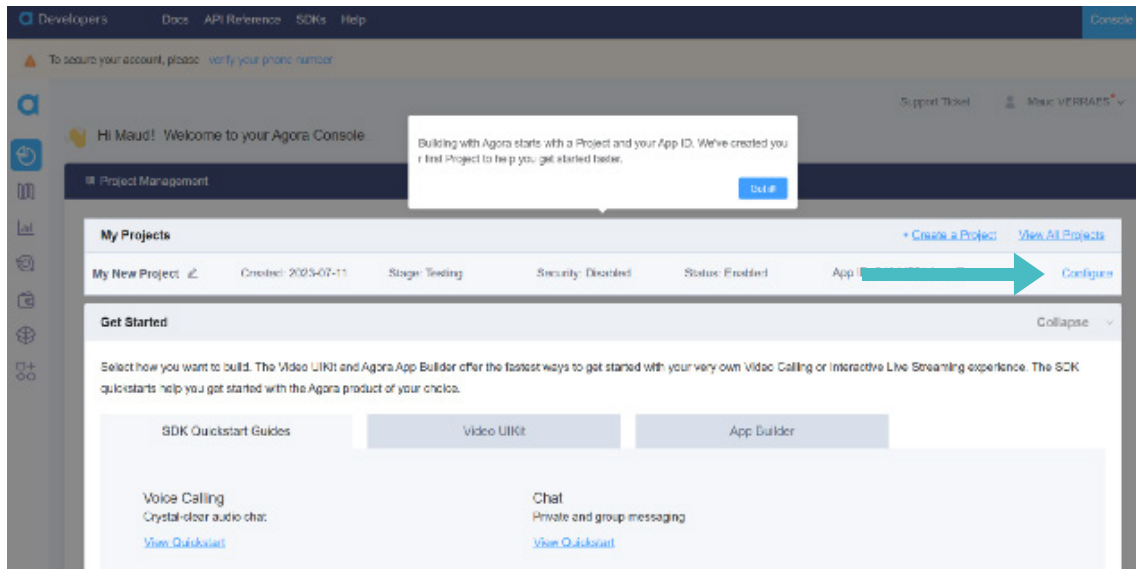
Then click on the “Start Building” button to finalize the creation of your agora.io account.



4 - RECOVERY OF IDENTIFIERS AGORA.IO

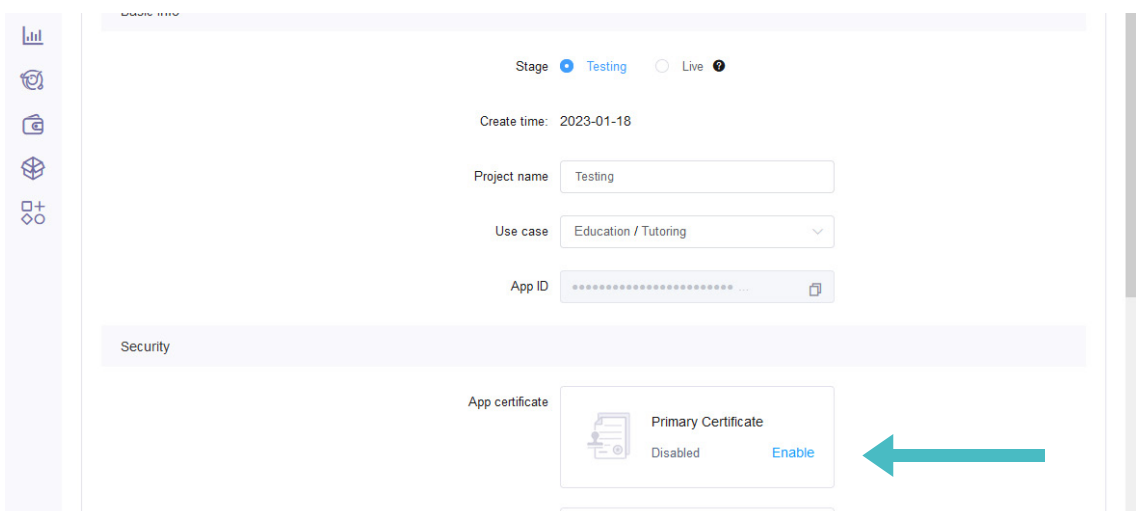
When your agora.io account has been created, you arrive on the agora.io dashboard, a first project entitled “My New Project” is automatically created

PROJECT SETUP



Click the “Configure” button on your project row to open the project configuration page.

You can rename your project on this page if you wish.



Click the “Enable” button in the “Primary Certificate” section to create an authentication certificate.

RECOVERY OF PROJECT IDENTIFIERS FOR MYBUDDYAPP

The screenshot shows the configuration interface for MyBuddyApp. It is divided into two main sections: "Basic Info" and "Security".

Basic Info:

- Stage: Testing Live
- Create time: 2023-01-18
- Project name:
- Use case:
- App ID:

Security:

- App certificate: Enabled
- App certificate:

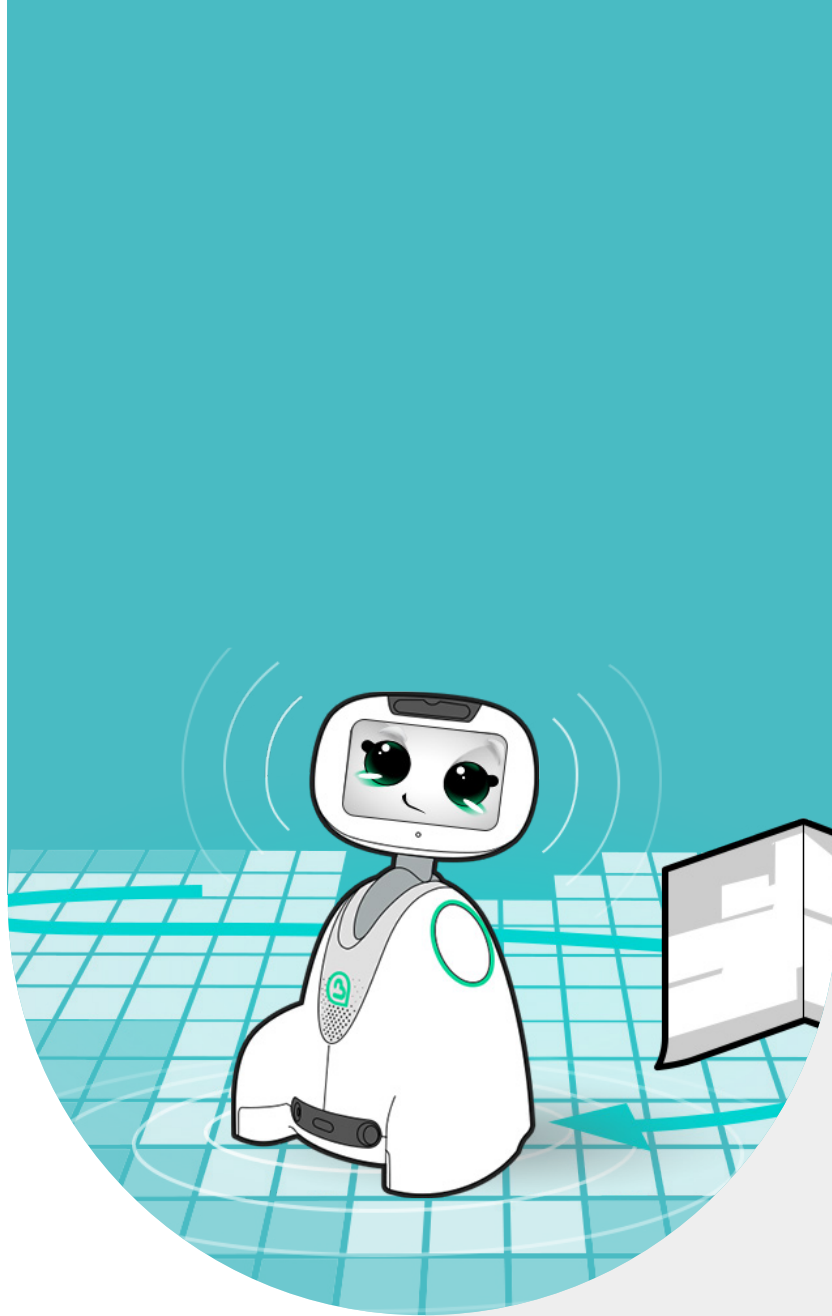
To enter your account in the MyBuddyApp application, you will need the "App ID" and "Primary Certificate" values.

By clicking on the icon that appears without the fields, the value will be copied to the clipboard.

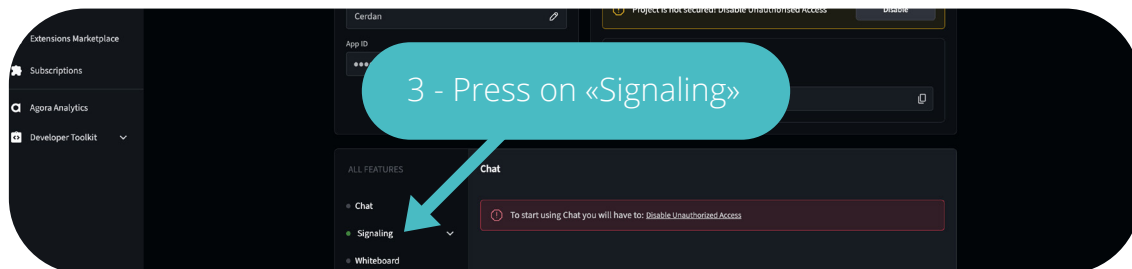
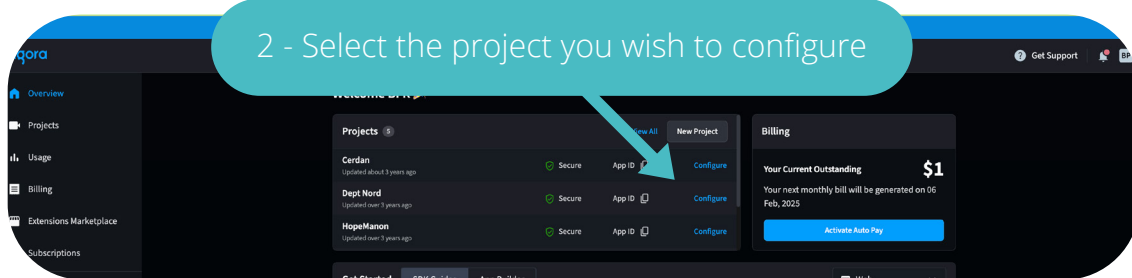
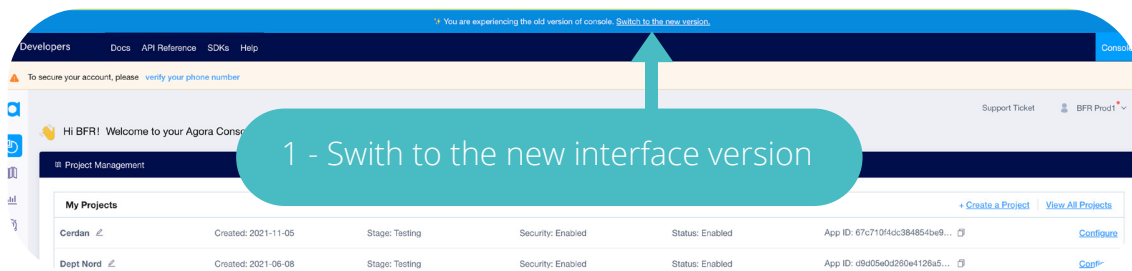
First copy the app ID and paste it into a text document, notepad or email. Then copy the app certificate and save it too. You can then paste these values into MyBuddyApp (see step 6 Agora.io account information).

This screenshot is similar to the one above but includes callouts to highlight the copying process:

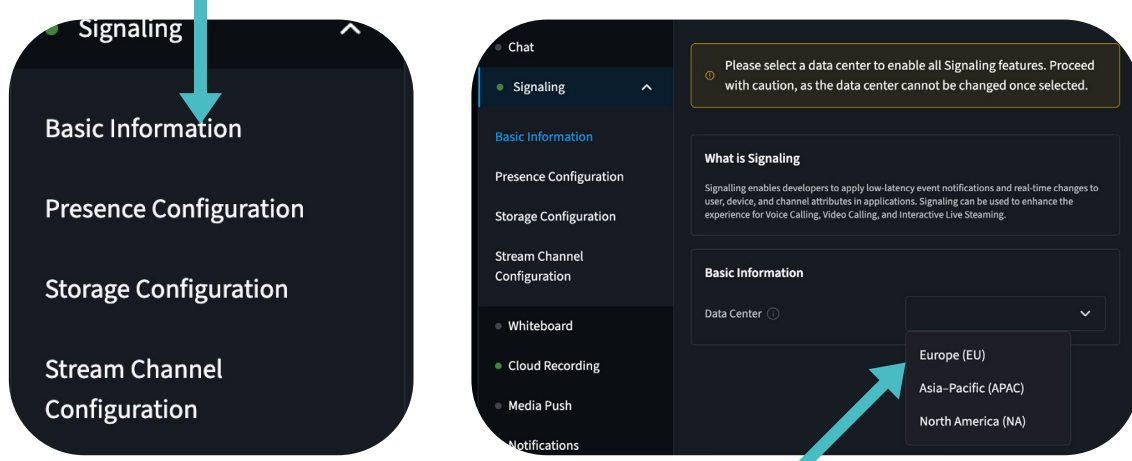
- A teal callout bubble labeled "1 - Copy" with an arrow pointing to the copy icon next to the App ID field.
- A teal callout bubble labeled "2 - Copy" with an arrow pointing to the copy icon next to the Primary Certificate field.



5 - ACTIVATION OF DATACENTER GEOLOCATION



4 - Select « Basic Information »



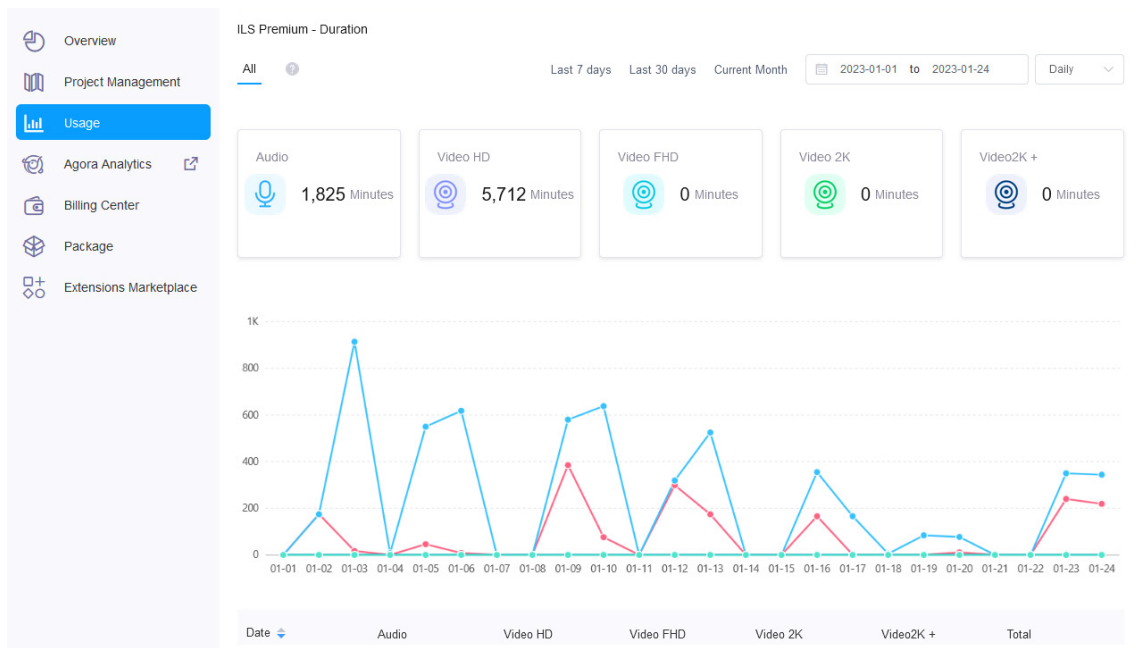
You can choose a geolocation for each project

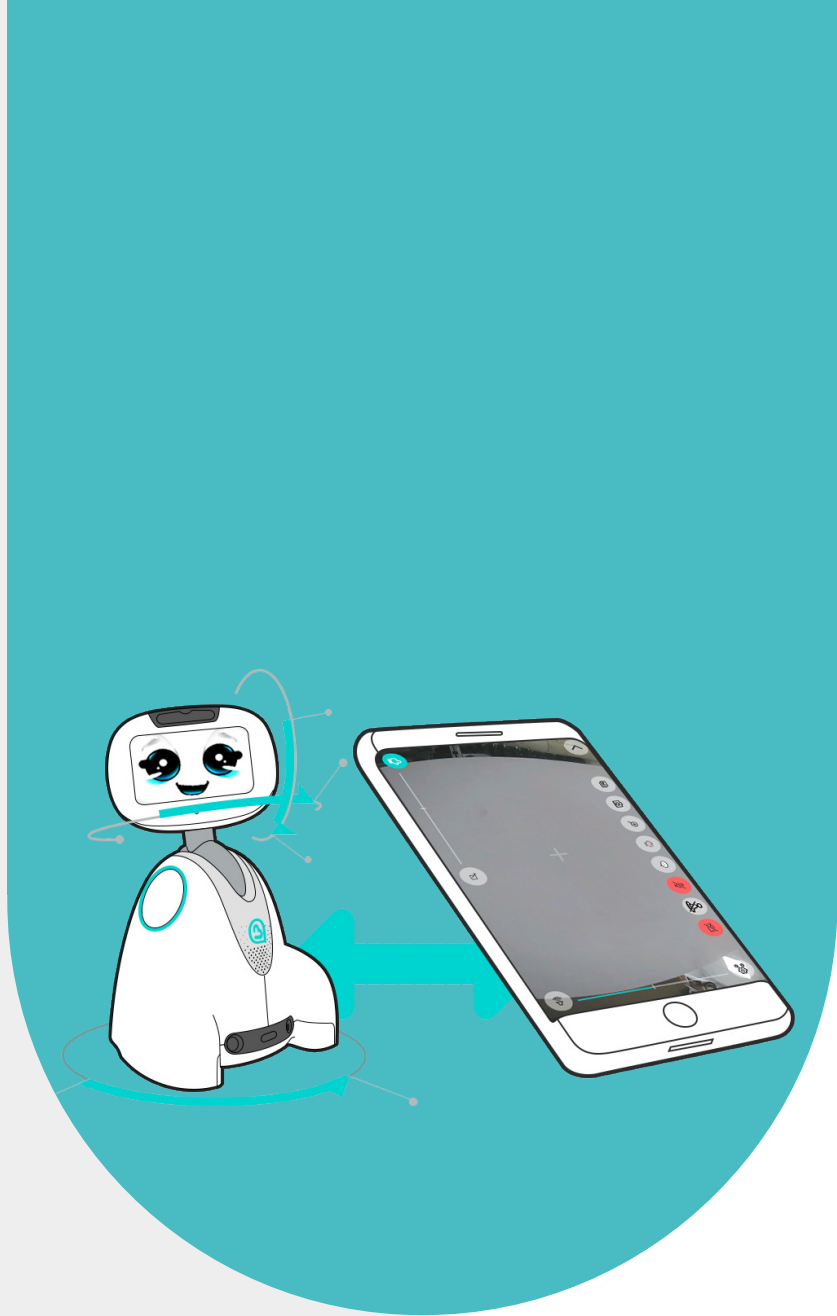
ATTENTION : Once you've chosen a location, you won't be able to change it.

AGORA.IO CONSUMPTION MONITORING

Creating an agora.io account is free and allows you to have 10,000 minutes of free communication per month with your Buddy, or around 5 hours per day. The solution then pays off if you exceed 10,000 minutes.

You can track your consumption in the "Usage" section of your agora.io console.





6 - INSTALLATION OF MYBUDDYAPP

The MyBuddyApp telepresence application can be installed on an Android tablet or phone, with an Android version greater than or equal to 9. The tablet is recommended over the phone because the screen size will make it easier to use.

Note: To get the Android version, open your device's Settings app, then at the bottom of the screen, tap About phone then Android version.

To download the application click on this link

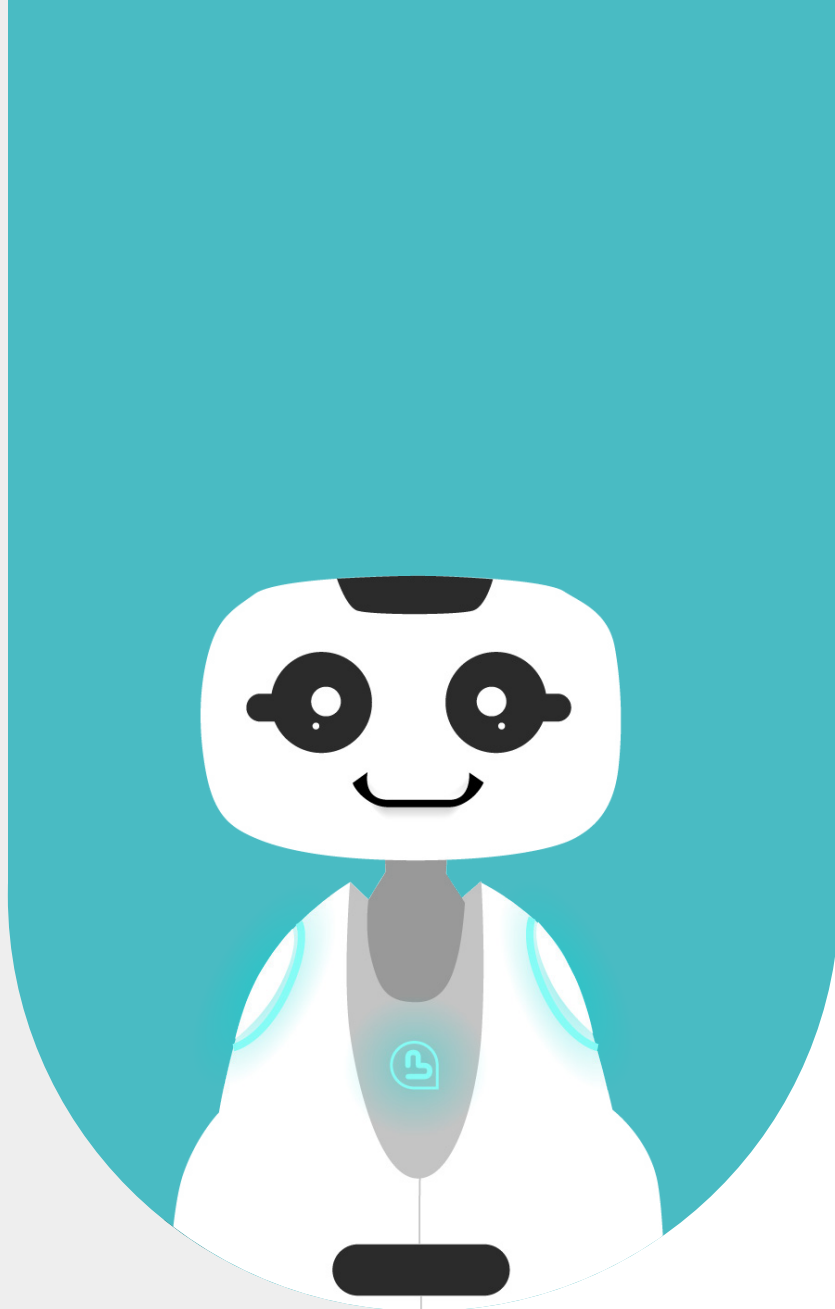
DOWNLOAD APK

Then proceed with the installation by clicking on the downloaded apk file on your device and following the instructions.

Note: If a popup appears with the message "File might be harmful", click on "Download anyway" and then on "OPEN".

Once the application is installed, you can launch it and begin the connection and configuration steps





7 - CONNECTION ON MYBUDDYAPP

The BlueFrog team has sent you the identifiers of your user account (email and password), the first step is to enter this account in MyBuddyApp.

MERCİ DE RENSEIGNER VOS INFORMATIONS DE COMPTE

Identifiant/email

Mot de passe

ANNULER

SUIVANT

Once your email and password have been entered, click on the “next” button.

PROVIDING INFORMATION USER

You must then enter your first and last name to finalize the creation of your MyBuddyApp user account, and click on the “next” button.

MERCİ DE RENSEIGNER VOS INFORMATIONS UTILISATEUR

Votre nom...

Votre prénom...

ANNULER

SUIVANT

AGORA.IO ACCOUNT INFORMATION

You must then enter the information for the agora.io project that you created in the first part. The App ID field of the agora.io project must be entered in the App ID field on MyBuddyApp, and the App Certificate field in the App Certificate field.

The screenshot shows a mobile application interface with a teal header and a dark grey body. The header contains the text "MERCI DE CRÉER UN COMPTE AGORA.IO ET DE RENSEIGNER LES INFORMATIONS" and a link "Cliquez ici pour plus d'informations sur la création d'un compte agora.io." with a user icon. Below the header are two input fields: "App ID" and "App Certificate". A red 'X' icon is next to the "App ID" field, and a teal circle with the number "1" has an arrow pointing to it. A teal circle with the number "2" has an arrow pointing to the "App Certificate" field. At the bottom, there are two buttons: "ANNULER" on the left and "SUIVANT" on the right, which has a checkmark icon.

Note: This step only appears for the first device you configure, if you use MyBuddyApp on other tablets and/or phones to communicate with your Buddy, it will not be necessary to enter the agora account information again. io when you install the application.

When the 2 fields are completed, you can click on the "Next" button.

To start communicating remotely, you must refresh your pages on your tablet and on the robot by swiping (sliding) your finger up and down on the home page. This allows applications to update themselves.

You can now use telepresence!